

CAPI

Cash Assistance Program for Immigrants

CAPI is a state-funded program that provides monthly cash benefits to older adults and adults with disabilities who do not qualify for SSI/SSP solely due to their immigration status. CAPI payment amounts vary depending on a person's marital status, living arrangements, and other income.



To Qualify for CAPI, you must

- Be a California resident
- De disabled, blind, or be 65+ years old
- Apply for SSI/SSP to show that you meet all SSI/SSP Requirements, except for immigration status
- Meet income limits (we will help you calculate this amount)
- Have resources below the allowable \$2,000 limit for single individuals, or \$3,000 for married couples



Medi-Cal



SMC Works



(800) 223-8383
8:00am - 5:00pm



Daly City - 271-92nd St.
Belmont - 400 Harbor Blvd Bldg B
East Palo Alto - 2415 University Ave
Redwood City - 2500 Middlefield Rd.



www.benefitscal.com



Public Assistance Programs

A healthy community is a strong community. San Mateo County strives to ensure that each resident has access to basic needs. We can help you obtain health care, shelter, food, financial assistance, and other resources through our services

Medi-Cal

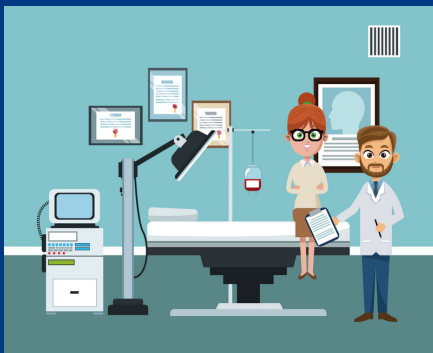
Medi-Cal is California's Medicaid health care program. Medi-Cal provides free or low-cost health care to people who qualify. It can help pay for doctor visits, hospital care, immunization (vaccines), pregnancy-related services, nursing home care, and other services.

Who is Eligible

- Low-Income Californians, including adults, children and their families, persons with disabilities, children in foster care, former foster youth up to age 26, and pregnant individuals.
- Eligible Immigrants receive full-scope Medi-Cal based on immigration status
 - Full coverage for young adults: Eligible young adults under age 26 can receive full-scope Medi-Cal, regardless of immigration status.
 - Full coverage for older adults: Eligible individuals in California age 50 or older can receive full-scope Medi-Cal, regardless of immigration status.

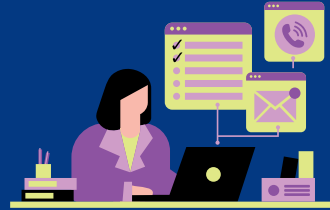
Don't know if you qualify for Medi-Cal? Even if you don't, we encourage you to still apply. We will evaluate you for other affordable health care options:

- Covered California: Helps qualified applicants obtain discounted health insurance from well-known companies
- Medi-Cal Access Program (MCAP): Provides healthcare to mid-income, uninsured pregnant women.



General Assistance

The General Assistance Program provides temporary financial support to eligible county residents who are not supported by their own means, other public funds, or assistance programs. Employable adults are required to participate in Employment Services. Some participants may be eligible for Medi-Cal, and/or food assistance.



CalWORKs

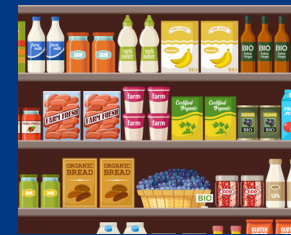
CalWORKs provides temporary financial assistance and support to eligible families with (or expecting) children. Benefits include cash assistance, food, child care and health coverage.

Eligibility

- **Households with children:** Your family may be eligible for CalWORKs if there is one or more children under age 19 in the home, or if you are pregnant.
- **Financial criteria:** Eligibility is also based on several factors, including family size, income, property and other resources, and special needs.
- **Immigrants and their families:** You may be eligible for CalWORKs and other benefit programs. You do not need to be a U.S. Citizen to apply.
- **Welfare-to-Work participation:** In most cases, all family members on CalWORKs who are 18 or older participate in the Welfare-to-Work employment services program. We will help you create an individualized plan to succeed in work, training, school, or other activities.

CalFresh

CalFresh provides supplemental nutrition assistance to low-income households San Mateo residents and households with low or no income. This includes those experiencing homelessness. Students of higher education, Supplemental Security Income (SSI) recipients, & Immigrants can qualify depending on their immigration status. Income limits depend on household size. To qualify, a household's income must be below the limit in the table below. Note: A household with an older or disabled person may have a higher gross monthly income limit.



Household Size	Gross Monthly Income Limit (Starting 10/01/2022)
1	\$2,266
2	\$3,052
3	\$3,840
4	\$4,626

Who must be included in the application?

- Anyone who purchases and prepares meals together everyone living at the address, such as husbands, wives, parents, and children under age 22

How benefit amounts get determined?

- Your benefit amount is based on your gross monthly income and household size minus monthly expenses such as:
 - Child support payments
 - Childcare expenses
 - Medical expenses if your household has at least one member who is age 60 or older or has a disability
 - Rent or mortgage
 - Utility and phone expenses
- Resources exempt from your application requirements include investments, property ownership, and bank accounts. But, income from those resources will count as part of your household's total gross income.